

**THE SLED SKATES INSTALLATION INSTRUCTION FOR SNOWDOG**

The skates set includes:

- Metal skate 2 pcs.
- Washer 4 pcs.
- M8 nut 4 pcs.



- 1 Prepare the workplace, the tools required and the sled for the procedure.
- 2 Choose the position on the sled for the skates installation. Normally, the skates are installed closer to the rear end of the left and right sled runners.



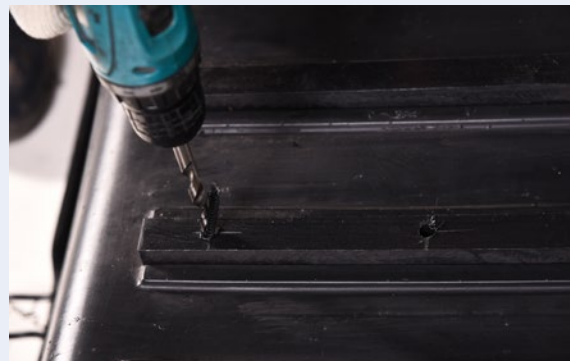
- 3 Make sure that the drilling spots aren't matching the tightening screws location.



- 4 Mark the spots of future drilling. Distance between the center of the holes should be 122 mm.



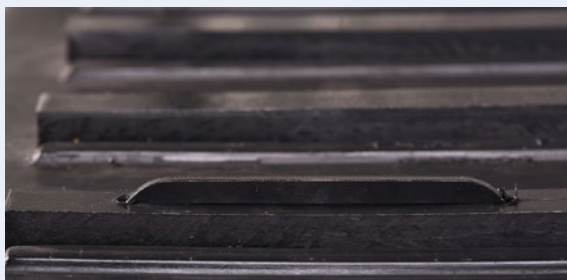
- 5 Drill 8.5–9 mm diameter holes.



- 6 Insert the skate into the drilled holes.



7 Hammer the skate in on the maximum depth.



8 Put the washers on the skate and place the nuts over them.



9 Tighten the skate fastening nuts.



10 Repeat the procedure from point 4 to 9 for the second skate.

11 Check the tightening of the skate fastening nuts after first 2–3 sled uses.