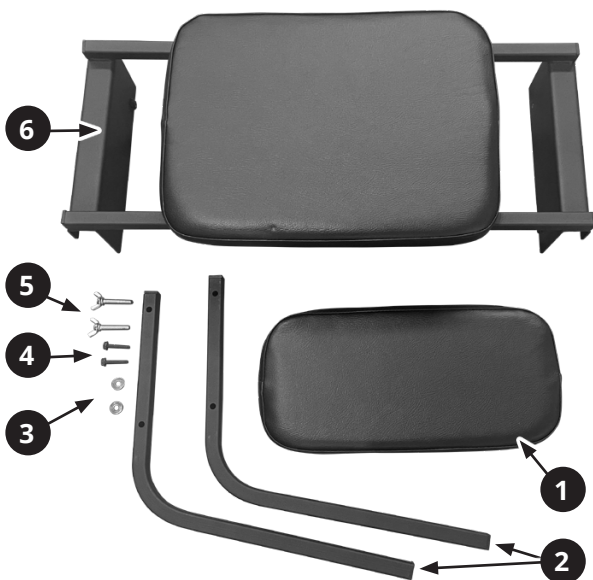


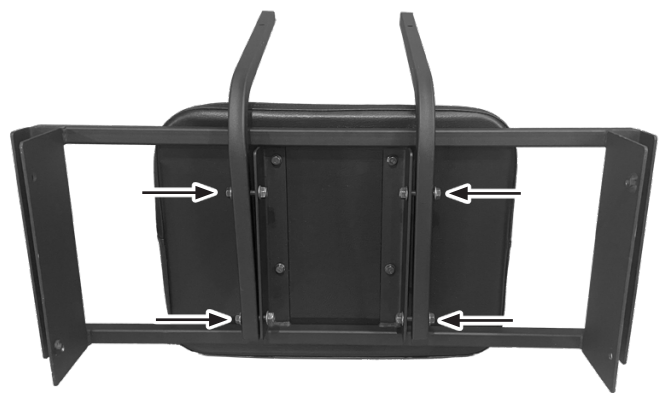
## Snowdog seat. Assembly and installation instructions.

### 1 Seat kit includes:

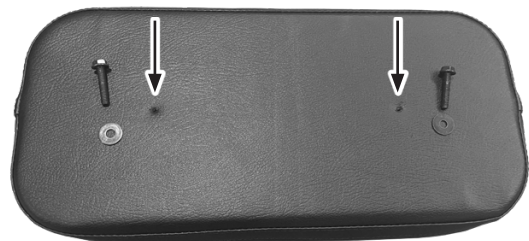
1. seat backrest — 1 pc.
2. seat backrest bracket — 2 pcs.
3. washer 8 mm. — 2 pcs.
4. bolt M8 — 2 pcs.
5. thumbscrew M8 — 2 pcs.
6. seat base platform with a bracket — 1 pc.



Insert the bolts that are installed in the seat base platform but do not tighten them.



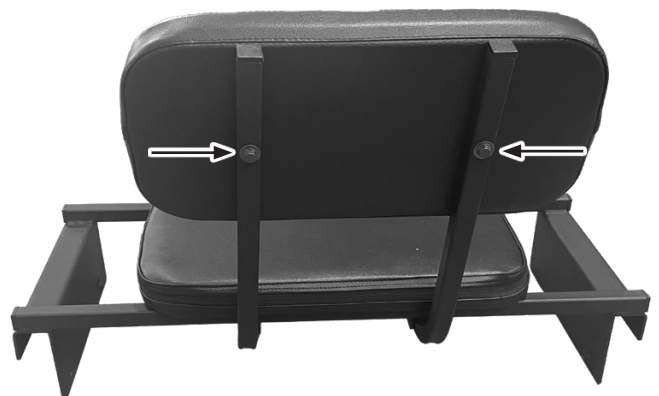
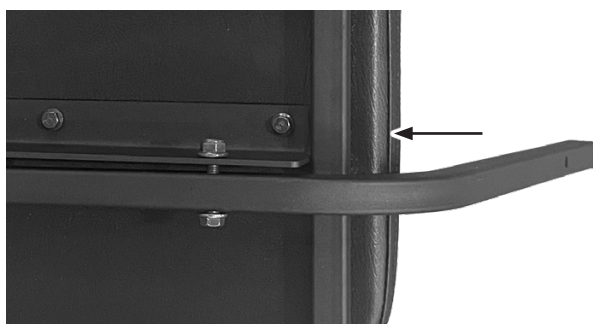
Enlarge the holes for bolts (4) in the seat backrest (1).



### 2 Seat assembly instructions.

Install the seat backrest brackets (2) on the seat base platform (6) so that zipper faces the brackets.

Screw the seat backrest (1) to the brackets (2) using bolts (4) and washers (3).



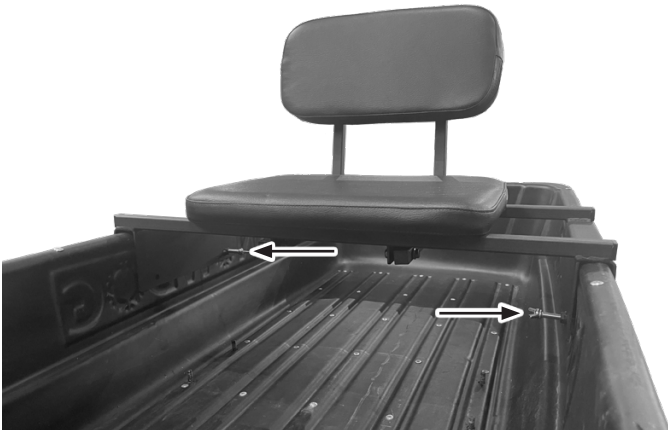
Tighten all bracket mounting bolts (2).

### 3 Sled seat installation instructions.

Put the seat on the sled in a place that you will find convenient.



Tighten the thumbscrews (5) into the seat base platform (6).



If the seat shifts when riding a Snowdog, choose more suitable place for installation of seat on the sled.

Tighten the thumbscrews (5) so that they leave marks on the sled.

Remove the seat from the sled.

In places where thumbscrews left the marks (5), drill the holes with a diameter of 8-9 mm.



Install back the seat and tighten the thumbscrews (5).